

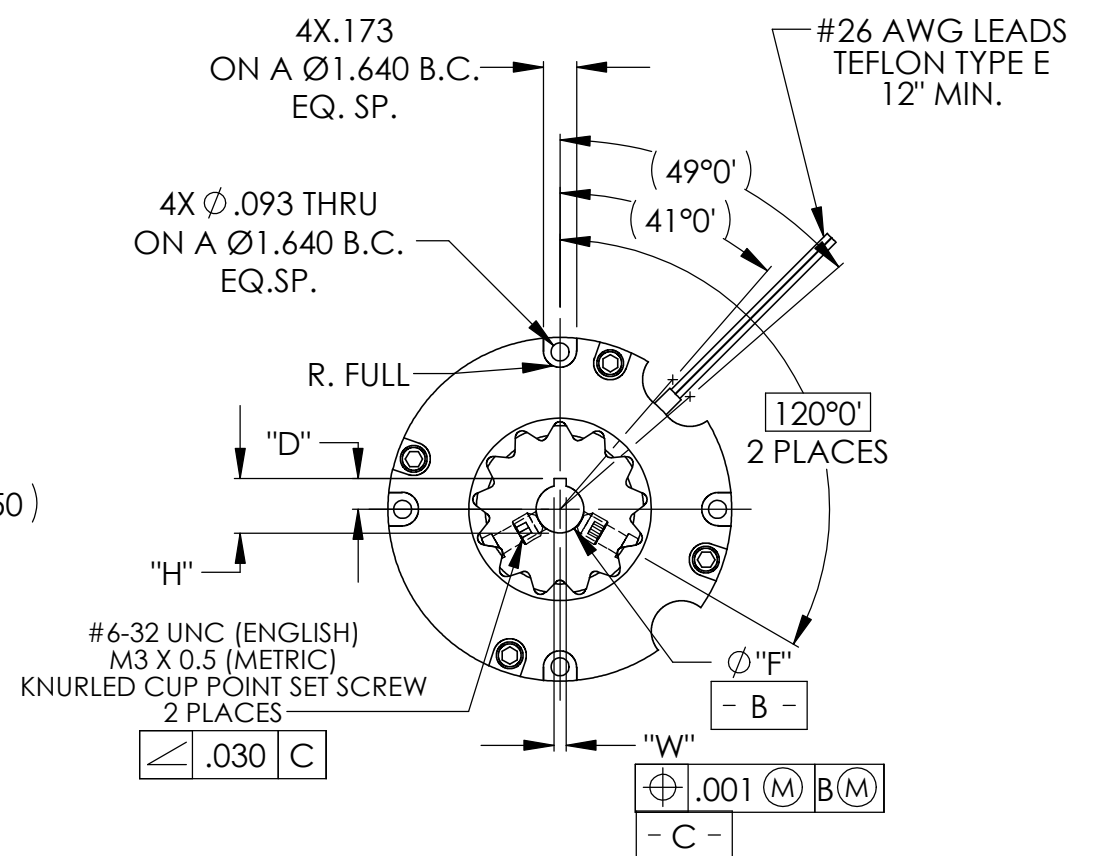
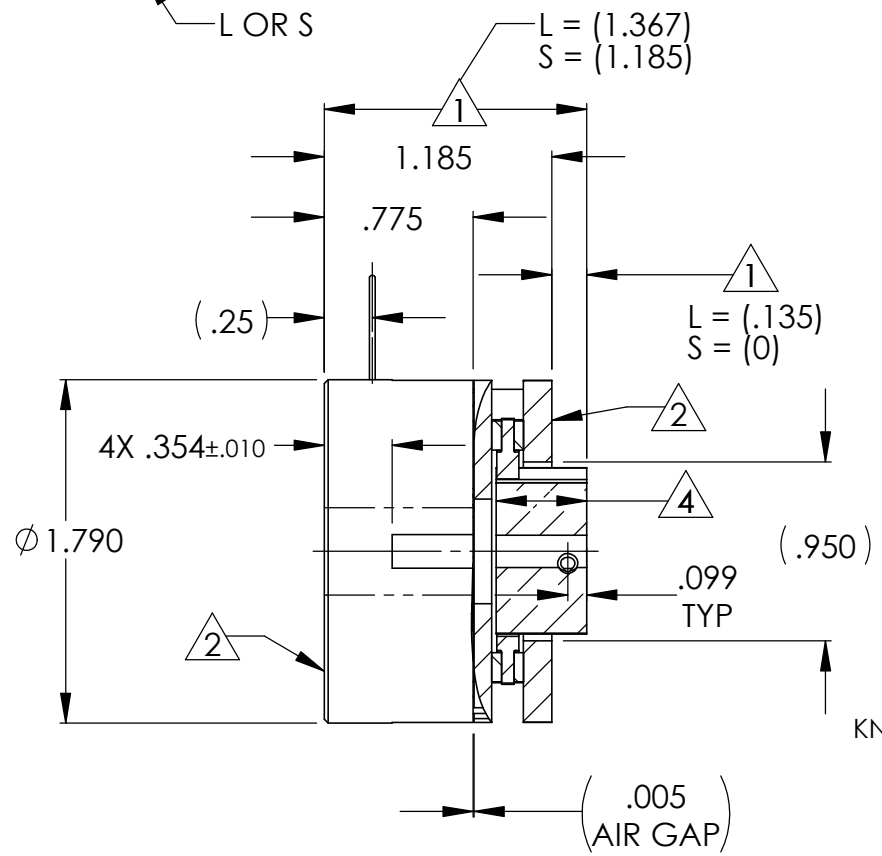
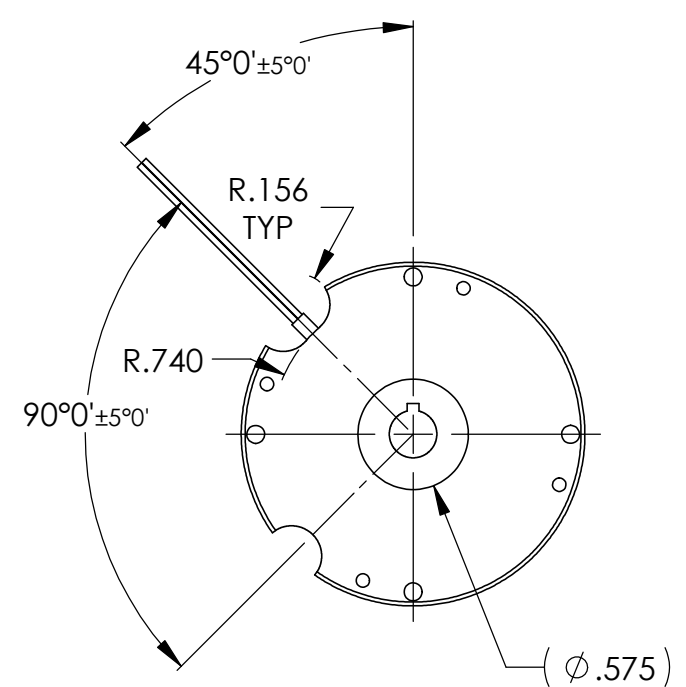
UNIT NUMBER	VOLTAGE	Ø"F" ^{+0.001} / _{-.000}	"W" ^{+0.0020} / _{-.0000}	"H" ^{+0.005} / _{-.000}
SB-17-24-E04	24 VDC	.250	.0625	.286
SB-17-24-E06	24 VDC	.375	.0938	.425
SB-17-24-E08	24 VDC	.500	.1252	.564
SB-17-90-E04	90 VDC	.250	.0625	.286
SB-17-90-E06	90 VDC	.375	.0938	.425
SB-17-90-E08	90 VDC	.500	.1252	.564

UNIT NUMBER	VOLTAGE	Ø"F" (H8)	"W" (Js9)	"H" ⁺¹ / ₀
SB-17-24-M06	24 VDC	6MM	2MM	1.0MM
SB-17-24-M08	24 VDC	8MM	3MM	1.4MM
SB-17-24-M10	24 VDC	10MM	3MM	1.4MM
SB-17-24-M12	24 VDC	12MM	4MM	1.8MM
SB-17-90-M06	90 VDC	6MM	2MM	1.0MM
SB-17-90-M08	90 VDC	8MM	3MM	1.4MM
SB-17-90-M10	90 VDC	10MM	3MM	1.4MM
SB-17-90-M12	90 VDC	12MM	4MM	1.8MM

REVISIONS				
REV	ECO	DESCRIPTION	DATE	CHECKED
-	-	NEW DRAWING		

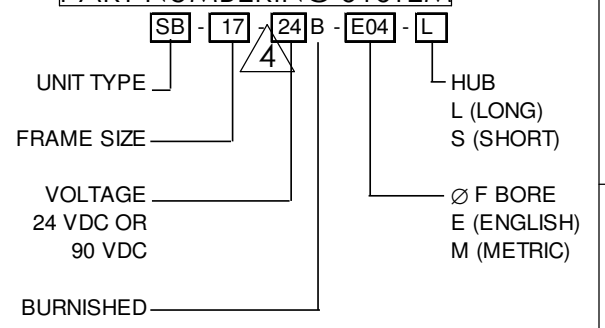
L OR S
CUSTOM BORES AVAILABLE,
CONTACT THOMSON DELTRAN FOR ASSISTANCE

L OR S



- 1 HUB LOCATION (SET BY CUSTOMER)
- 2 CAN BE MOUNTED ON EITHER FACE
- 3 100°C MOTOR AMBIENT TEMP. @ BRAKE LOCATION
BRAKE COIL TEMP RISE (40°C) WHEN CONTINUOUSLY
ENERGIZED @ RATED VOLTAGE. i. e., 140°C
BRAKE WILL RELIABLY RELEASE @ 90%
OF RATED VOLTAGE.
- 4 S= HUB .020 OFF ARMATURE
AND FLUSH WITH FLANGE.
- 5. BACKLASH REQUIREMENT: 1.5° MAX.

PART NUMBERING SYSTEM



TECHNICAL DATA @ 20°C		
STATIC TORQUE (LB IN MIN)	10	
COIL : VOLTAGE (DC)	24	90
RESISTANCE (OHMS)	63.5±10%	907.0±10%
WATTS (MAX)	10.1 @ 24 VDC	10.0 @ 90 VDC
RELEASE (PULL IN) VOLTAGE (MAX)	16.0 VDC	60.0 VDC
	21.6 VDC @ MIN AMP TURNS	81.0 VDC @ MIN AMP TURNS
PULL -IN msec (NOM)	20	
DROP-OUT msec (NOM)	10	
DIELECTRIC STRENGTH	500 VAC - 60 HZ - 1 MIN	
INSULATION RESISTANCE	500 MEGSOHMS MIN @ 500 VDC	
ROTOR/HUB INERTIA (NOM)	1.8705 x 10 ⁻⁴ (-5) LB IN SEC ²	
WEIGHT	.72 LB	

ASSEMBLY AND ALL COMPONENTS MUST MEET EU DIRECTIVE 2011/65/EU (RoHS)

THIRD ANGLE PROJECTION

THE INFORMATION CONTAINED IN THIS DRAWING IS THE SOLE PROPERTY OF THOMSON DELTRAN ANY REPRODUCTION IN PART OR WHOLE WITHOUT THE WRITTEN PERMISSION OF THOMSON DELTRAN IS PROHIBITED

UNLESS OTHERWISE SPECIFIED: DIMENSIONS ARE IN INCHES
DIAMETERS CONCENTRIC .003 TIR
FACES PERPENDICULAR .003
INTERPRETATION PER ASME
Y14.5M-1994

FRACTIONS ±1/64 DECIMALS .00 ±.01 ANGLES ±30'

63 MACHINE SURFACES

HEAT TREAT -

FINISH -

REMOVE ALL BURRS AND BREAK SHARP EDGES -.005/010
ALL INSIDE CORNERS TO BE .015 R
MAX UNLESS OTHERWISE SPECIFIED

APPROVALS DATE

DRAWN P.JL 02-11-97

CHECKED A.J. COMITO 02-17-97

DES ENG -

MFG ENG -

QUAL ENG -

THOMSON DELTRAN

**SERVO BRAKE
ENGLISH-METRIC**

SIZE DWG. NO. SB-17 CATALOG

SCALE 1:1 SHEET 1 OF 1 CODE IDENT: 58655