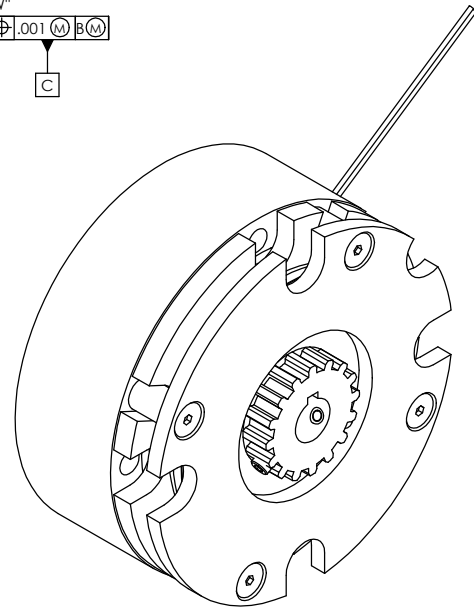
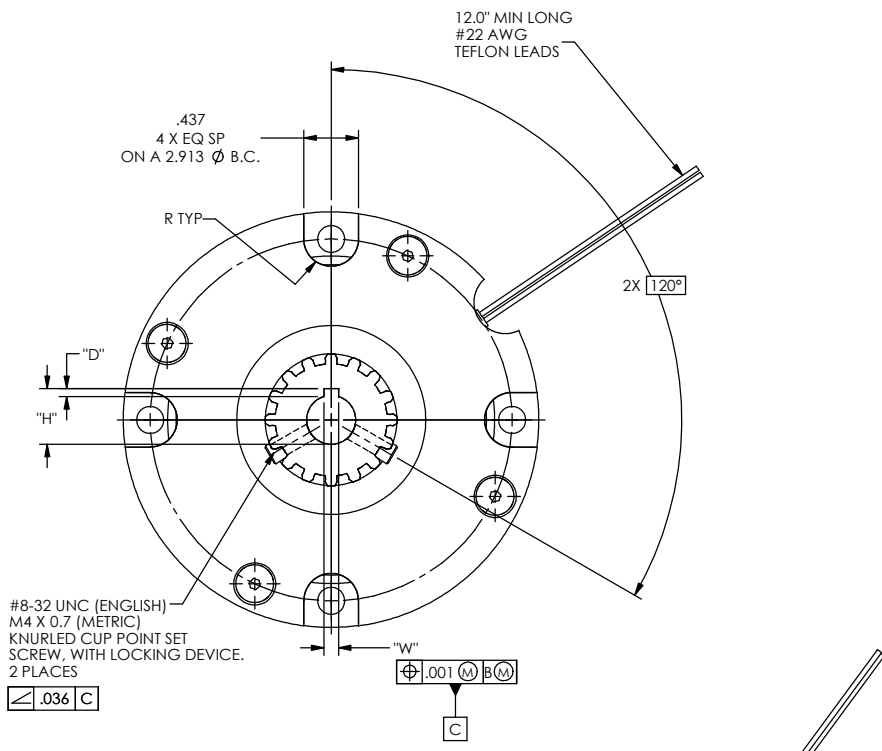
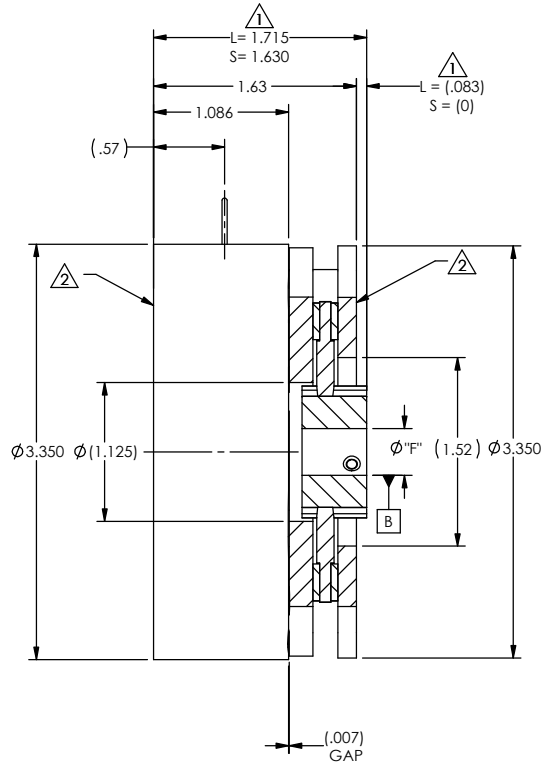
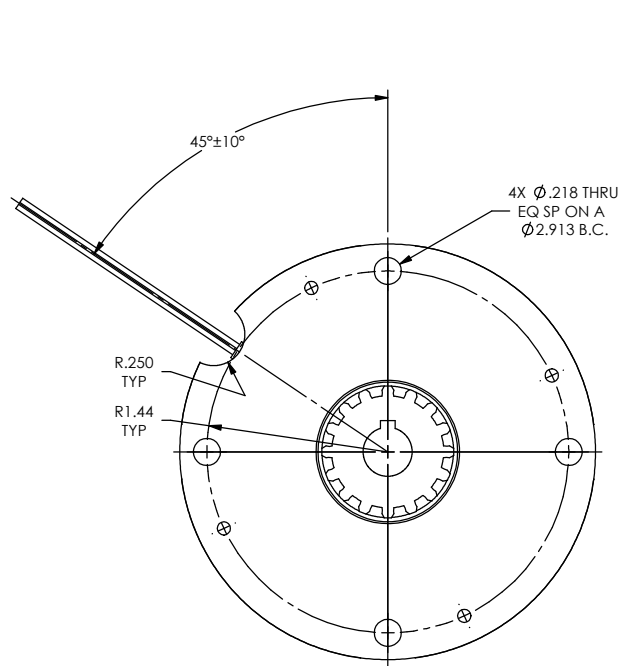


MODEL NUMBER	ØF	H	W	VOLTAGE	MODEL NUMBER	ØF	D	W	VOLTAGE
SB-30-24-E06	.375	.425	.0938	24 VDC	SB-30-24-M10	10mm	1.4mm	3mm	24 VDC
SB-30-24-E08	.500	.564	.1252		SB-30-24-M12	12mm	1.8mm	4mm	
SB-30-24-E10	.625	.709	.1880		SB-30-24-M16	16mm	2.3mm	5mm	
SB-30-90-E06	.375	.425	.0938	90 VDC	SB-30-90-M10	10mm	1.4mm	3mm	90 VDC
SB-30-90-E08	.500	.564	.1252		SB-30-90-M12	12mm	1.8mm	4mm	
SB-30-90-E10	.625	.709	.1880		SB-30-90-M16	16mm	2.3mm	5mm	

REVISIONS				
REV	ECO	DESCRIPTION	DATE	CHECKED
		NEW DRAWING		
A		1. REDRAWN TO SW 2. ADDED ROHS BLOCK	1/12/2014	CAG

L OR S  
 CUSTOM BORES AVAILABLE. CONTACT FACTORY FOR ASSISTANCE

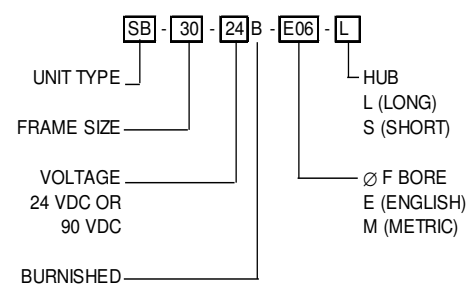


**ASSEMBLY AND ALL COMPONENTS MUST MEET EU DIRECTIVE 2002/95/EC (RoHS)**

TECHNICAL DATA @ 20°C		
STATIC TORQUE (LB-IN) MIN	140	
COIL DATA:	VOLTAGE (V <sub>DC</sub> )	24      90
	RESISTANCE (OHMS)	28.5±10%      374.0±10%
	POWER (WATTS) MAX	(22.5 @ 24 V <sub>DC</sub> )      (24.1 @ 90 V <sub>DC</sub> )
PULL-IN VOLTAGE (V <sub>DC</sub> ) MAX	16.0	60.0
	21.6 VDC @ MIN AMP TURNS $\Delta$	81.0 VDC @ MIN AMP TURNS $\Delta$
PULL-IN TIME (ms) NOM	70	
DROP-OUT TIME (ms) NOM	45	
DIELECTRIC STRENGTH	500 VAC - 60 HZ - 1 MIN	
INSULATION RESISTANCE	500 MEGOHMS MIN @ 500 VDC	
BRAKE ROTOR /HUB INERTIA (LB-IN-S <sup>2</sup> )	1.7197 X 10 <sup>-4</sup> LB IN SEC <sup>2</sup>	
BRAKE WEIGHT (LB)	(2.75)	

- NOTES:
- HUB LOCATION (SET BY CUSTOMER)
  - CAN BE MOUNTED ON EITHER FACE
  - 100°C MOTOR AMBIENT TEMP. @ BRAKE LOCATION. BRAKE COIL TEMP RISE (40°C) WHEN CONTINUOUSLY ENERGIZED @ RATED VOLTAGE. i.e., 140°C BRAKE WILL RELIABLY RELEASE @ 90% OF RATED VOLTAGE.
  - BACKLASH REQUIREMENT: 1.5° MAX.

**PART NUMBERING SYSTEM**



<p>THIRD ANGLE PROJECTION</p>	<p>UNLESS OTHERWISE SPECIFIED: DIMENSIONS ARE IN INCHES. DIAMETERS CONCENTRIC .003 TIR. FACES PERPENDICULAR .003 INTERPRETATION PER ASME Y14.5M-1994.</p> <p>FRACTIONS ±1/64    DECIMALS .00 ±.01    ANGLES ±30'    .000 ±.005</p> <p>MACHINE SURFACES</p> <p>HEAT TREAT</p> <p>FINISH</p>	<p>PARTS LIST</p> <p>REMOVE ALL BURRS AND BREAK SHARP EDGES - .003/010 ALL INSIDE CORNERS TO BE .015 R MAX UNLESS OTHERWISE SPECIFIED.</p> <p>APPROVALS      DATE</p> <p>DRAWN      CLW      02/19/97</p> <p>CHECKED      A.J.COMITO      03/06/97</p> <p>DES ENG</p> <p>MFG ENG</p> <p>QUAL ENG</p>	<p><b>THOMSON DELTRAN</b></p> <p><b>SERVO BRAKE ENGLISH-METRIC</b></p> <p>SIZE DWG. NO. C SB-30 CATALOG</p> <p>SCALE 1:1    SHEET 1 OF 1    CODE IDENT: 58655</p>
		<p>THE INFORMATION CONTAINED IN THIS DRAWING IS THE SOLE PROPERTY OF THOMSON DELTRAN. ANY REPRODUCTION IN PART OR WHOLE WITHOUT THE WRITTEN PERMISSION OF THOMSON DELTRAN IS PROHIBITED.</p>	